



3rd February 2025

February



Headteacher's Newsletter

Issue 6

Dates for the Diary...

- 3.2.25 St. David's Day photos for Nursery and Reception only.
- 5.2.25 In school Valentine's disco.
- 12.2.25 V2C tree planting in the community.
- 14.2.24 Technquest trip (Cherry, Hawthorn and Maple classes).
- 21.2.25 Last day of school for children- half term holidays.
- 3.3.25 Children return to school from the half term holidays.
- 7.3.25 Eisteddfod- whole school.
- 10.3.25 Book Looks for parents (3:15pm in your child's class).
- 13.3.25 Young Carers Day.
- 14.3.25 Red Nose Day.
- 17.3.25 World Book Day.
- 24.3.25 Cycle proficiency for Y6.
- 31.3.25 INSET day- school closed.
- 2.4.25 Colofoto class photos and Year 6 leavers photos.
- 4.4.25 Deadline for full-time Nursery applications for Sept. 2025.
- 7.4.25 Crucial Criw Y6.
- 9.4.25 Easter service with Rev. Walker.
- 11.4.25 Easter Bonnets / Crazy Hair Parade (2pm).
- 11.4.25 Last day of school for children- Easter holidays.
- 28.4.25 Children return to school from the Easter holidays.
- 30.4.25 Y6 Helping Hands transition to Cynffig Comp.
- 5.5.25 May Day Bank holiday- school closed.
- 23.5.25 Last day of school for children- half term Whitsun holidays.
- 2.6.25 Children return to school from the Whitsun holidays.
- 11.5.25 Y6 Helping Hands transition to Cynffig Comp.
- 12.6.25 Family Fun Day (Nursery-Year 2 Sports morning (9:30am), picnic lunch, disco and stalls in the afternoon).
- 23.6.25 Year 3- Year 6 Sports morning (9:30am starting).
- 25.6.25 Whole school transition day.
- 3.7.25 Parent consultation meetings, if required (from 3:15pm).
- 4.7.25 Y6 Prom.
- 15.7.25 Year 6 Leavers concert dress rehearsal for whole school.
- 17.7.25 Year 6 Leavers concert (2pm)



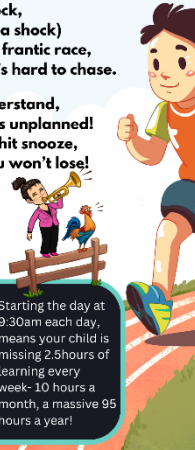
At 8:50am, the school day begins, with learning, laughter and big grins! If you're on time, you're in the flow, Ready, Steady- off we go!



But creeping in at 9 o'clock, (Or after that- oh, what a shock) Means rushing, stress, a frantic race, And missing the start- it's hard to chase.

A one-off dash? We understand, but daily dashing? That's unplanned! So set that alarm, don't hit snooze, Being on time means you won't lose!

8:50- that's the way, start on time and your own day!



Starting the day at 9:15am each day, means your child is missing 75 minutes of learning every week- 5hours a month, a whopping 47.5hrs a year!

Starting the day at 9:30am each day, means your child is missing 2.5hours of learning every week- 10 hours a month, a massive 95 hours a year!

Welcome...



I cannot believe it is February already, time is flying by! We are hard at work preparing for our Eisteddfod and doing far more in school for the Urdd which is local this year (Margam)! We will be sending home an Eisteddfod art competition, which we are hoping Ysgol Y Ferch O'r Sger pupils will be judging sometime during the week commencing 3.3.25.

I have noticed recently a rise in children being picked up early before the school day ends and an increase in number of children who are late. For some children this is becoming a regular pattern. An 'L' code will show on the register if your child arrives to school before 9:30am, a 'U' code will show on the register when a child arrives after 9:30am. These 'L' and 'U' codes affect your child's overall attendance. If your child has a reason for early collection, we will need to upload a copy of the appointment for your child's records.

A polite reminder... Head lice within the school has been raised by some parents- please check your child's hair regularly. Treatment if eggs/lice are found is free from a pharmacy under the common ailments scheme (up to twice a year). #hairupbest

Safeguarding/Child Protection... Are you worried about a child in the community?

Bridgend Children's Services duty desk: **01656 642320** NSPCC **0808 800 5000 / 0800 1111**

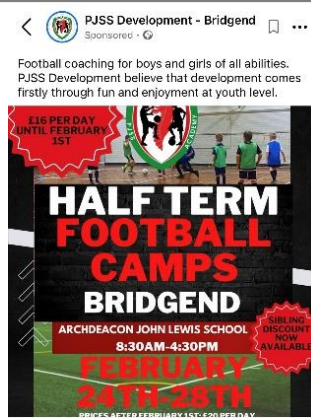
BCBC jobs...

Are you interested in earning some extra money? Scan the QR code below to find out more!



Opportunities for half term holidays...

Is your little one crazy about football? This is a great opportunity to get you child active and busy over the half term holidays.



Make your views known...

Bridgend what you to have your say about how they spend public funds. Scan the QR code to take part in their survey.



Money...

Scan below to find out more!



Criw Cymraeg...

Dwi'n caru ti!
I love you!

Dwi'n hoffi cwtshes.
I love cwtches.



Admin... Contact us...

01656 754870 or admin@cornelips.bridgend.cymru or check out our school website www.cornelipriamary.com

We also have secure class Dojo pages too.

School attendance...

Overall: January's attendance was **90%**, which is the same as last month! Our school target is **92%**, so we are **2%** lower than we'd like!

Our January attendance is...

Class 1 Seedlings... 85%

Class 2 Willow... 91%

Class 3 Holly... 90%

Class 4 Rowan... 94%

Class 5 Birch... 90%

Class 6 Cherry...94%

Class 7 Hawthorn...91%

Class 8 Oak...89%

Class 9 Maple... 89%



If your child is ill, please inform the school office by 9:30am. You can leave a message if the line is busy. It is important for us to know why your child is absent as our Education Welfare Officer (EWO) checks our registers regularly. Any child that has been unaccounted for 5 days will result in Laurie Baldwin, our Education Welfare Officer calling to carry out a welfare check.

If a child misses school, they are missing out on vital learning.

#attendtoachieve



#ATTENDTOACHIEVE AUTUMN TERM 2024

Dear Parents/Carers,

As part of Bridgend's attendance drive [#attendtoachieve](#), I am writing with an update on our school attendance and a few reminders.

So far this year, a big well done to seven classes, who have managed to maintain their attendance above our target of 92%. These are Willow (DH), Holly (AMC), Rowan (LP), Birch (LOB), Cherry (NS), Hawthorn (SR) and Maple (PMC). **A special mention to Dosbarth Cherry, our class currently with the highest attendance so far this term at 93%.** Most other classes are currently between **87-92%** and our overall school attendance for Autumn Term is 91.4%.

As of the end of December 2024, we were 72 days into the school year. Every child has a 'mark' for the morning and afternoon every day that we are open (discounting things like INSET days), so 72 days equates to 144 (half day) sessions.

100%	144 sessions	Not Missing any lessons. Your child has the optimum chance to achieve well and is taking full advantage of every learning opportunity.
97%-99%	140 – 143 sessions	Your child has missed no more than 3 sessions.
93%-96%	130 – 134 sessions	Your child has missed between 2 – 4 days so far.
92% and below	132 or fewer sessions.	Your child has already missed over 4 days of school this term.

Lateness

Pupils who arrive at school *after* the teacher has taken the register (usually 8:50-9:10am and first five minutes in the afternoon), are marked as late (L), unless they are more than half an hour late. In this case, it is marked as a "U", which actually counts as an absence for the purposes of attendance figures. To date this term, there have been over **325** late marks across the school, over 1 per pupil on average. **Please can I urge parents to make every effort to ensure that children arrive at school by 8:50am so that they are ready to come straight in as soon as staff open the doors.**

Sickness

As wintertime arrives, it is common to see an increase in sickness absences. To date, absence for sickness and medical appointments counts for over 5% of our pupil absence during the Autumn term, accounting for over 7.2 sessions lost since September! Obviously, children will be ill from time to time and understandably, some parents may be uncertain about whether they should send their child into school or not. [Public Health Wales](#) produce a guide to common infections which may be helpful, scan the QR code for guidance.



Attendance Policy

Further to [BCBC](#) publishing their updated [School Attendance Enforcement Policy](#), our Governing Body have now agreed our revised [Attendance Policy](#) which reflects the changes and expectations made of us by Welsh Government and BCBC. As part of this approach, we very much want to channel our efforts towards promoting good attendance (as opposed to the potential consequences arising from poor attendance) and our termly [#attendtoachieve](#) letters are part of that promotion, helping to raise awareness of expectations and where you can access current information on your child's attendance. The office staff are also able to provide a print-off of their attendance register marks for the current academic year should you have any concerns.

As part of my responsibilities as Headteacher, I regularly review the attendance of individual pupils and will write to parents where attendance reaches certain thresholds, either of absenteeism, or punctuality. We also meet regularly (every 3 weeks) with our Education Welfare Officer (EWO) Laurie Baldwin to discuss attendance of individual pupils and, where necessary, may refer families to them in the hope that they can support families to make improvements.

Holidays in Term Time

[Holiday request forms](#) are available in hard copy from the office, or via our website. We all recognise that holidays taken during the school term breaks are likely to be significantly more expensive (as all school staff know full well!) but can I stress that affordability is not considered an acceptable reason for taking holidays during term time. When completing the request form, we ask that parents explain clearly why such an absence is being taken in term time so that any special circumstances can be given consideration. Please can I remind parents that BCBC now expect parents to provide at least four weeks notice of a holiday request. Therefore, any requests made within this window are likely to be 'unauthorised'.

Thank you for your continued support with this important matter – together, we can ensure that your children make the best possible progress during their time at Corneli Primary School.